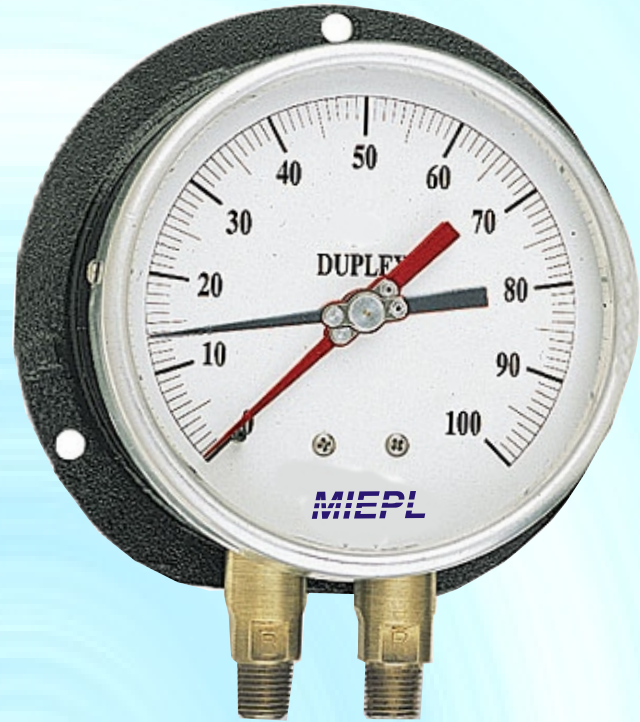
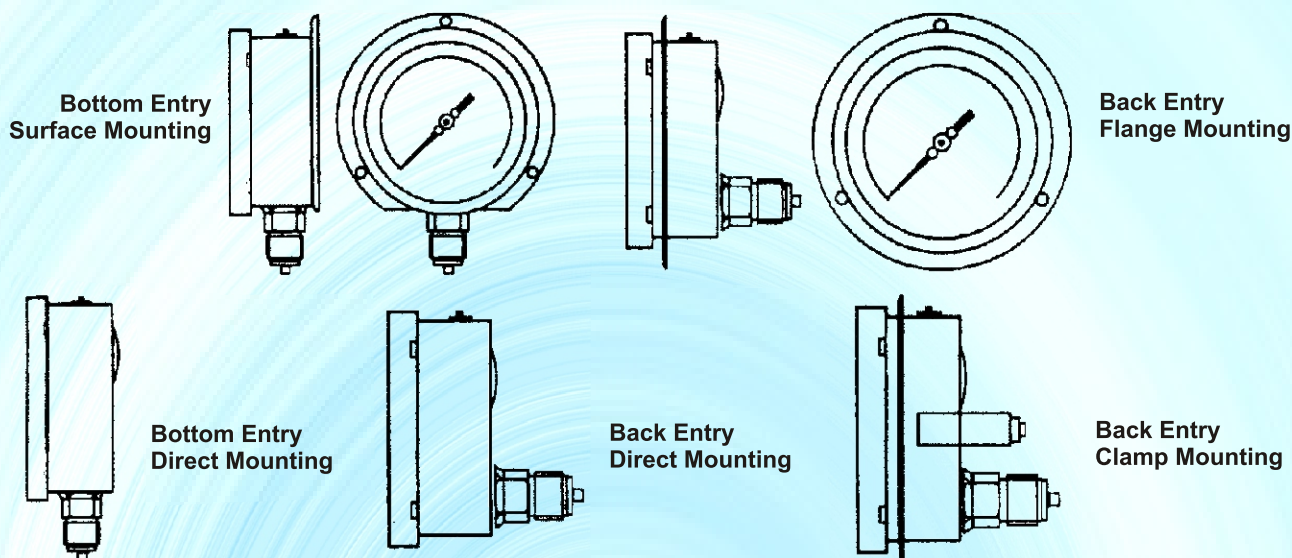


MIEPL make Duplex Pressure Gauges are the criterion of accuracy and leadership in the field of Precise Pressure Measurement with exclusive design and construction which adapt the gauges to even the most effective application of corrosive fluids such as urea far crude Petroleum, Paper Pulp, Fertiliser etc.



STANDARD VERSION

| | | |
|---------------------|---|---|
| ACCURACY | : | ± 1.5% of Full Scale Range |
| AMBIENT TEMPERATURE | : | -20°C to 65°C |
| PROCESS TEMPERATURE | : | 270°C MAX |
| OPERATING PRESSURE | : | Maximum 75% of the full scale value. |
| OVER PRESSURE LIMIT | : | 130% of the full scale value. |
| SENSING ELEMENT | : | "C" Type Bourden Tube. |
| PROTECTION | : | IP 65 / IP 55 |
| CASE & BEZAL | : | Stainless Steel 304 |
| MOVEMENT | : | Stainless Steel 304 / 316 |
| BOURDON | : | Stainless Steel 316 |
| SOCKET | : | Stainless Steel 304 / 316 |
| DIAL | : | Aluminium, Black graduation on White background. |
| POINTER | : | Aluminium, Black Coloured Micrometer zero adjustable. |
| WINDOW | : | Glass 4.00 mm thick |
| GASKET | : | EPDM |
| BLOW OFF DISC | : | EPDM |
| JOINTS | : | TIG Argon arc. welding |



OTHER MOUNTINGS AVAILABLE ON REQUEST

PRODUCT SELECTION

- DIAL SIZE : 150 MM
- RANGE : 0.6, 0-1, 1.6, 2.5, 4, 6, 10, 16, 21, 25, 40, 60, 100, 160, 250, 400 & 600 kg / cm²
- OTHER RANGES : Vacuum Gauge - 760-0 MMHg, - 1kg/cm²-0
Compound Gauge - 1 to 1.5, 3, 5, 9, 15, 25 kg/cm² / Bar
- UNITS : Single Scale - kg/cm², Bar
Dual Scale-Bar & PSI, kg/cm² & PSI
- CONNECTION : 1/2", 3/8" - BSP / NPT- (M)
- ENTRY : Bottom & Back
- MOUNTING : Direct, Surface, Panel

OTHER OPTIONS

- ACCURACY : ± 1% of Full Scale Range
- ACCURACY : ± 0.5% of Full Scale Range
- LIQUID : GLYCERINE FILLED
- WINDOW : SHATTERPROOF GLASS

MILLENNIUM INSTRUMENTS LIMITED

H.O. : 101, 'Dwarkashish', Main Vikas Marg, Shakarpur, Delhi-92 (INDIA)
 Tel. : +91-11-2201-4325, 4327, 65094516. Fax.: 22014326
 Website : www.mil.org.in , www.miepl.com, E-mail : miepl@miepl.com

Works : F-12, Site-B, UPSIDC Ind. Area Surajpur, Greater Noida,
 Gautam Budh Nagar-201306 (U.P.) E-mail : sales@miepl.com, info@miepl.com