

Flow Measurement

SITRANS F M

Flow sensor MAG 5100 W

Overview



The SITRANS F M MAG 5100 W is an electromagnetic flow sensor designed to meet ground water, drinking water, waste water, sewage or sludge applications.

Benefits

- DN 15 to DN 1200 / 2000 (½" to 48"/78")
- Stock program of MAG 5100 W secures short delivery time
- Connection flanges EN 1092-1 (DIN 2501), ANSI, AWWA, AS and JIS.
- NBR Hard Rubber and Ebonite Hard Rubber liner for all water applications
- EPDM liner with drinking water approvals
- Hastelloy integrated grounding and measuring electrodes
- Increased low flow accuracy for water leak detection, due to coned liner design (Article No. 7ME6520, DN 15 to 300 mm (½" to 12")).
- Drinking water approvals
- Suitable for direct burial and constant flooding
- Custody transfer approvals
- Build-in length according to ISO 13359; the standard includes sizes up to DN 400.
- Easy commissioning, SENSORPROM unit automatically uploads calibration values and settings.
- Designed so patented in-situ verification can be conducted. Using SENSORPROM fingerprint.
- Custody Transfer option for water billing, with type approval after OIML R 49 and verified according to MI-001
 - pattern approval OIML R 49 (Denmark, Germany)
 - conforms to ISO 4064 and EN 14154 for mechanical flowmeters
 - PTB K7.2
- FM Fire Service Meter (Class Number 1044) for automatic fire protection systems
- Meets EEC directives: PED, 97/23/EC pressure directive for EN1092-1 flanges
- Simple onsite or factory upgrade to IP68/NEMA 6P of a standard sensor
- MCERTS approval for UK environmental market

Application

The main applications of the SITRANS F M electromagnetic flow sensors can be found in the following fields:

- Water abstraction
- Water treatment
- Water distribution network (leak detection management)
- Custody transfer water meters
- Irrigation
- Waste water treatment
- Filtration plant (e.g. reverse osmosis and ultra filtration)
- Industrial water applications

Mode of operation

The flow measuring principle is based on Faradays law of electromagnetic induction according to which the sensor converts the flow into an electrical voltage proportional to the velocity of the flow.

Integration

The complete flowmeter consists of a flow sensor and an associated transmitter SITRANS F M MAG 5000, MAG 6000 or MAG 6000 I.

The flexible communication concept USM II simplifies integration and update to a variety of fieldbus systems, e.g. HART, DeviceNet, PROFIBUS DP and PA, FOUNDATION Fieldbus H1 or Modbus RTU/RS 485.

Technical specifications

Product characteristic	MAG 5100 W (7ME6520) Mainly for the European market EPDM or NBR lining	MAG 5100 W (7ME6580) Mainly for the non-European market Ebonite lining
Design and nominal size	Coned sensor: DN 15 ... 300 (½" ... 12") Full bore sensor: DN 350 ... 1200 (14" ... 48")	Full bore sensor: DN 25 ... 2000 (1" ... 78")
Measuring principle	Electromagnetic induction	Electromagnetic induction
Excitation frequency (Mains supply: 50/60 Hz)	DN 15 ... 65 (½" ... 2½"): 12.5 Hz/15 Hz DN 80 ... 150 (3" ... 6"): 6.25 Hz/7.5 Hz DN 200 ... 300 (8" ... 12"): 3.125 Hz/3.75 Hz DN 350 ... 1200 (14" ... 48"): 1.5625 Hz/1.875 Hz	DN 25 ... 65 (1" ... 2½"): 12.5 Hz/15 Hz DN 80 ... 150 (3" ... 6"): 6.25 Hz/7.5 Hz DN 200 ... 1200 (8" ... 48"): 3.125 Hz/3.75 Hz DN 1400 ... 2000 (54" ... 78"): 1.5625 Hz/1.875 Hz
Process connection		
Flanges ⁶⁾		
• EN 1092-1	PN 10 (145 psi): DN 200 ... 300 (8" ... 12") Flat face PN 10 (145 psi): DN 350 ... 1200 (14" ... 48") Raised face ¹⁾ PN 16 (232 psi): DN 50 ... 300 (2" ... 12") Flat face ²⁾ PN 16 (232 psi): DN 350 ... 1200 (14" ... 48") Raised face PN 40 (580 psi): DN 15 ... 40 (½" ... 1½") Flat face	Raised face ²⁾ (EN 1092-1, DIN 2501 and BS 4504 have the same mating dimensions) PN 6 (87 psi): DN 1400 ... 2000 (54" ... 78") PN 10 (145 psi): DN 200 ... 2000 (8" ... 78") PN 16 (232 psi): DN 65 ... 600 (2½" ... 24") PN 40 (580 psi): DN 25 ... 50 (1" ... 2")
• ANSI B16.5	Class 150: ½" ... 12" flat face; 14" ... 24" raised face	Class 150: 1" ... 24"; raised face
• AWWA C-207	Class D: 28" ... 48", flat face	Class D: 28" ... 78", flat face
• AS4087	PN 16 (DN 50 ... 1200), (2" ... 48") 16 bar (232 psi)	PN 16 (DN 50 ... 1200), (2" ... 48") 16 bar (232 psi)
• JIS B 2220:2004	-	K10 (1" ... 24")
Rated Operation conditions		
Ambient temperature		
• Sensor	-40 ... +70 °C (-40 ... +158 °F)	-20 ... +70 °C (-4 ... +158 °F)
• With compact transmitter MAG 5000/6000 ³⁾	-20 ... +60 °C (-4 ... +140 °F)	-20 ... +60 °C (-4 ... +140 °F)
Operating pressure (Abs) [abs. bar] (Maximum operating pressure depending on flange standard, decreases with increasing operating temperature)	DN 15 ... 40 (½" ... 1½"): 0.01 ... 40 bar (0.15 ... 580 psi) DN 50 ... 300 (2" ... 12"): 0.03 ... 20 bar (0.44 ... 290 psi) DN 350 ... 1200 (14" ... 48"): 0.01 ... 16 bar (0.15 ... 232 psi)	DN 25 ... 50 (1" ... 2"): 0.01 ... 40 bar (0.15 ... 580 psi) DN 65 ... 1200 (2½" ... 48"): 0.01 ... 16 bar (0.15 ... 232 psi) DN 1400 ... 2000 (54" ... 78"): 0.01 ... 10 bar (0.15 ... 145 psi)
Enclosure rating		
• Standard	IP67 to EN 60529/NEMA 4X/6 (1 mH ₂ O for 30 min)	IP67 to EN 60529/NEMA 4X/6 (1 mH ₂ O for 30 min)
• Option	IP68 to EN 60529/NEMA 6P (10 mH ₂ O continuously)	IP68 to EN 60529/NEMA 6P (10 mH ₂ O continuously)
Pressure drop	DN 15 and 25 (½" and 1"): Max. 20 mbar (0.29 psi) at 1 m/s (3 ft/s). DN 40 ... 300 (1½" ... 12"): Max 25 mbar (0.36 psi) at 3 m/s (10 ft/s) DN 350 ... 1200 (14" ... 48"): Insignificant	Insignificant
Test pressure	1.5 x PN (where applicable) FM Fire Service: 2 x PN	1.5 x PN (where applicable)
Mechanical load (vibration)	18 ... 1000 Hz random in x, y, z, directions for 2 hours according to EN 60068-2-36 Sensor: 3.17 grms Sensor with compact MAG 5000/6000 mounted transmitter: 3.17 grms Sensor with compact MAG 6000 I mounted transmitter: 1.14 grms	18 ... 1000 Hz random in x, y, z, directions for 2 hours according to EN 60068-2-36 Sensor: 3.17 grms Sensor with compact MAG 5000/6000 mounted transmitter: 3.17 grms Sensor with compact MAG 6000 I mounted transmitter: 1.14 grms

Flow Measurement

SITRANS F M

Flow sensor MAG 5100 W

Product characteristic	Mainly for the European market (7ME6520)	Mainly for the non-European market (7ME6580)
	EPDM or NBR lining	Ebonite lining
<u>Medium conditions</u>		
Temperature of medium		
• NBR	-10 ... +70 °C (14 ... 158 °F)	-
• EPDM	-10 ... +70 °C (14 ... 158 °F)	-
• EPDM/NBR (MI-001)	0.1 ... 30 °C (32 ... 76 °F)	-
• Ebonite	-	-10 ... +70 °C (14 ... 158 °F)
EMC	2004/108/EC	2004/108/EC
Design		
Material		
• Housing and flanges	Carbon steel ASTM A 105, with corrosion-resistant two-component epoxy coating (min. 150 µm) Corrosivity category C4, according to ISO 12944-2	Carbon steel ASTM A 105, with corrosion-resistant two-component epoxy coating (min. 150 µm) Corrosivity category C4, according to ISO 12944-2
• Measuring pipe	Stainless steel AISI 304/1.4301	Stainless steel AISI 304/1.4301
• Electrode	Hastelloy C	Hastelloy C
• Grounding electrode	Hastelloy C	Hastelloy C
• Terminal box	Fibre glass reinforced polyamide	Fibre glass reinforced polyamide
Certificates and approvals		
Calibration		
• Standard production calibration, calibration report shipped with sensor	Zero-point, 2 x 25 % and 2 x 90 % (default)	Zero-point, 2 x 25 % and 2 x 90 % (default)
Custody Transfer (only together with MAG 6000 CT)		
	OIML R 49 pattern approval cold water (Denmark and Germany): DN 50 ... 300 (2" ... 12") MI-001 cold water (EU): DN 50 ... 300 (2" ... 12") PTB K7.2: Chilled water energy metering DN 50-300 (order as special) Certificate number: 22 76.10 02	
Drinking water approvals		
	EPDM liner: NSF/ANSI Standard 61 ⁵⁾ (Cold water, US) WRAS (WRc, BS6920 cold water, GB) ACS (F) DVGW W270 (D) Belgaqua (B)	NSF/ANSI Standard 61 ⁵⁾ (Cold water, US) WRAS (WRc, BS6920 cold water, GB)
Other approvals		
	MCERTS PED conforming: All EN1092-1 flanges and ANSI Class 150 (< DN 300 (< 12")) – 97/23/EC ⁴⁾ CRN (DN 50 - DN 1200 (2" ... 48")) CSA Class I, Div 2 FM Class I, Div 2 FM Fire Service Approval according to class 1044 ⁷⁾ VdS: Extinguishing systems DN 50 ... 300	PED conforming: All EN1092-1 flanges (<= DN 600 (<= 24") – 97/23/EC ⁴⁾ CRN CSA Class I, Div 2 FM Class I, Div 2

1) Type 01 (SORF)

2) DN ≤ 600 type 01 (SORF); DN > 600 type 11

3) With compact transmitter MAG 5000 CT/6000 CT -20 ... +50 °C (-4 ... +122 °F); with compact MI-001 approved transmitter -25 ... +55 °C (-13 ... +131 °F)

4) For sizes larger than 600 mm (24") in PN 16 PED conformity is available as a cost-added option. The basic unit will carry the LVD (Low Voltage Directive) and EMC approval. All products sold outside of EU and EFTA are excluded from the directive, also products sold into certain market sectors are excluded. These include:

a) Meters used in networks for the supply, distribution and discharge of water.

b) Meters used in pipelines for the conveyance of any fluid from offshore to onshore.

c) Meters used in the extraction of petroleum or gas, including Christmas tree and manifold equipment.

d) Any meter mounted on a ship or mobile offshore platform. For further information on the PED standard and requirements see page 9/6.

5) Including Annex G

6) DN 750, DN 1050 and DN 1100 (30", 42" and 44") not available with EN 1092-1 (PN 10 and PN 16) and AS4087 flanges

7) DN 50, DN 80, DN 100, DN 150, DN 200, DN 250, and DN 300 (2", 3", 4", 6", 8", 10", and 12") with ANSI B16.5 Class 150 flanges

Flow Measurement SITRANS F M

Flow sensor MAG 5100 W

MAG 5100 W (7ME6520) with MAG 6000 CT (Revenue program) MI-001

MAG 5100 W CT program is type approved according to international water meter standard OIML R 49. Since the first November 2006 the MI-001 water meter directive is in force, which means that all water meters can be sold across the EU borders if the water meters contain a MI-001 label.

The MAG 5100 W MI-001 verified and labeled products are a Class II approval according to Directive 2004/22/EC of the European Parliament and Council of March 31, 2004 on measuring instruments (MID), Annex MI-001 in the sizes from DN 50 to DN 300 (Article No. 7ME6520).

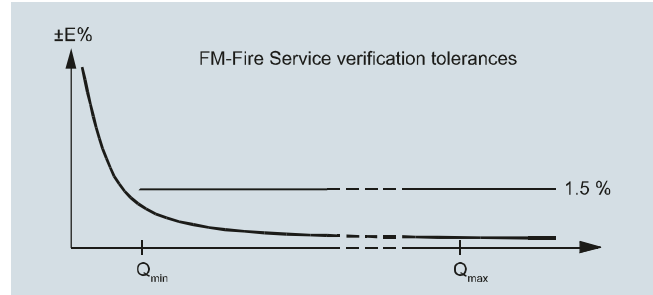
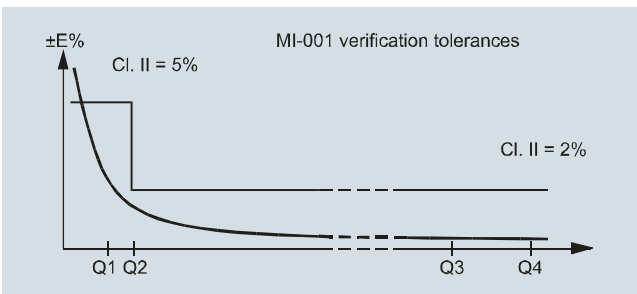
The MID certification is obtained as a modul B + D module approval according to the above mentioned directive.

Module B : Type approval according to OIML R 49

Module D : Quality insurance approval of production

MAG 5100 W (7ME6520) with MAG 5000/MAG 6000 or MAG 6000 CT for Fire Service applications

MAG 5100 W (7ME6520) is FM Fire Service approved for automatic fire protection systems. The approval is applicable for the sizes DN 50, DN 80, DN 100, DN 150, DN 200, DN 250 and DN 300 (2", 3", 4", 6", 8", 10" and 12") with ANSI B16.5 Class 150 flanges. The FM Fire Service approved product can be ordered via the Z-options P20, P21 and P22.



Flow Measurement

SITRANS F M

Flow sensor MAG 5100 W

MAG 5100 W (7ME6520) MI-001 verified and labeled products at a given Q3 and Q3/Q4 = 1.25 and Q2/Q1 = 1.6 measuring ranges see table below:

Order code: P11	DN 50 (2")	DN 65 (2½")	DN 80 (3")	DN 100 (4")	DN 125 (5")	DN 150 (6")	DN 200 (8")	DN 250 (10")	DN 300 (12")
„R“ Q3/Q1	25	25	25	25	25	25	25	25	25
Q4 [m³/h]	20	31.25	50	78.75	125	200	312.5	500	787.5
Q3 [m³/h]	16	25	40	63	100	160	250	400	630
Q2 [m³/h]	1.02	1.6	2.6	4.03	6.4	10.24	16	25.6	40.32
Q1 [m³/h]	0.64	1.00	1.60	2.52	4.0	6.4	10.0	16.0	25.2

Order code: P12	DN 50 (2")	DN 65 (2½")	DN 80 (3")	DN 100 (4")	DN 125 (5")	DN 150 (6")	DN 200 (8")	DN 250 (10")	DN 300 (12")
„R“ Q3/Q1	63	63	63	63	63	63	63	63	63
Q4 [m³/h]	20	31.25	50	78.75	125	200	312.5	500	787.5
Q3 [m³/h]	16	25	40	63	100	160	250	400	630
Q2 [m³/h]	0.41	0.63	1.02	1.6	2.54	4.06	6.35	10.2	16.0
Q1 [m³/h]	0.25	0.40	0.63	1.00	1.59	2.54	3.97	6.35	10.0

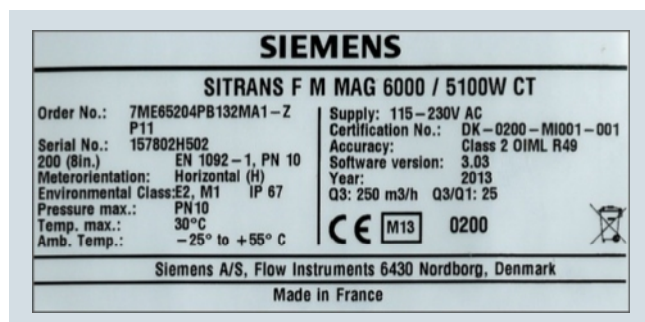
Order code: P13	DN 50 (2")	DN 65 (2½")	DN 80 (3")	DN 100 (4")	DN 125 (5")	DN 150 (6")	DN 200 (8")	DN 250 (10")	DN 300 (12")
„R“ Q3/Q1	80	80	80	80	80	80	80	80	80
Q4 [m³/h]	20	31.25	50	78.75	125	200	312.5	500	787.5
Q3 [m³/h]	16	25	40	63	100	160	250	400	630
Q2 [m³/h]	0.32	0.50	0.80	1.20	2.00	3.20	5.0	8.0	12.6
Q1 [m³/h]	0.20	0.31	0.50	0.75	1.25	2.00	3.13	5.0	7.90

Order code: P16	DN 50 (2")	DN 65 (2½")	DN 80 (3")	DN 100 (4")	DN 125 (5")	DN 150 (6")	DN 200 (8")	DN 250 (10")	DN 300 (12")
„R“ Q3/Q1	160	160	160	160	160	160	160	160	160
Q4 [m³/h]	50	78.75	125	200	312.5	500	787.5	1250	2000
Q3 [m³/h]	40	63	100	160	250	400	630	1000	1600
Q2 [m³/h]	0.40	0.63	1.00	1.60	2.50	4.00	6.3	10.0	16.0
Q1 [m³/h]	0.25	0.39	0.63	1.00	1.56	2.50	3.94	6.3	10.0

Order code: P17	DN 50 (2")	DN 65 (2½")	DN 80 (3")	DN 100 (4")	DN 125 (5")	DN 150 (6")	DN 200 (8")	DN 250 (10")	DN 300 (12")
„R“ Q3/Q1	200	200	200	200	200	200	200	200	200
Q4 [m³/h]	50	78.75	125	200	312.5	500	787.5	1250	2000
Q3 [m³/h]	40	63	100	160	250	400	630	1000	1600
Q2 [m³/h]	0.32	0.50	0.80	1.28	2.00	3.20	5.0	8.0	12.8
Q1 [m³/h]	0.20	0.32	0.50	0.80	1.25	2.00	3.15	5.0	8.0

Order code: P18	DN 50 (2")	DN 65 (2½")	DN 80 (3")	DN 100 (4")	DN 125 (5")	DN 150 (6")	DN 200 (8")	DN 250 (10")	DN 300 (12")
„R“ Q3/Q1	250	250	250	250	250	250	250	250	250
Q4 [m³/h]	50	78.75	125	200	312.5	500	787.5	1250	2000
Q3 [m³/h]	40	63	100	160	250	400	630	1000	1600
Q2 [m³/h]	0.26	0.40	0.64	1.02	1.60	2.56	4.0	6.4	10.24
Q1 [m³/h]	0.16	0.25	0.40	0.64	1.00	1.60	2.52	4.0	6.4

The Label is placed on the side of the encapsulation. An example of the product label is shown below:



OIML R 49/MI-001 approvals valid for:

- DN 50 to 300 mm (2" to 12")
- Horizontal installation
- Compact or remote with max. 3 m cable
- Power supply 115/230 V AC

Other restrictions may apply (see certificate).

Special OIML / MI-001 settings:

- Unit: m³
- Qmax: Q3
- CutOff: 0.1 %
- Digital output: Frequency

For other factory settings, see Operating Instructions.

Flow Measurement

SITRANS F M

Flow sensor MAG 5100 W

Selection and Ordering data	Article No.	Selection and Ordering data	Article No.
Sensor SITRANS F M MAG 5100 W	7 ME 6 5 2 0 -	Sensor SITRANS F M MAG 5100 W	7 ME 6 5 2 0 -
Hastelloy electrodes, carbon steel flanges, EU water markets and low flow applications	■ ■ ■ 1 ■ - 2 ■ ■ ■	Hastelloy electrodes, carbon steel flanges, EU water markets and low flow applications	■ ■ ■ 1 ■ - 2 ■ ■ ■
Diameter		Communication	
DN 15 (½")	◆ 1 V	None	◆ A
DN 25 (1")	◆ 2 D	HART	◆ B
DN 40 (1½")	◆ 2 R	PROFIBUS PA Profile 3 (only MAG 6000/MAG 6000 I)	◆ F
DN 50 (2")	◆ 2 Y	PROFIBUS DP Profile 3 (only MAG 6000/MAG 6000 I)	◆ G
DN 65 (2½")	◆ 3 F	Modbus RTU/RS 485 (only MAG 6000/MAG 6000 I)	◆ E
DN 80 (3")	◆ 3 M	FOUNDATION Fieldbus H1 (only MAG 6000/ MAG 6000 I)	◆ J
DN 100 (4")	◆ 3 T		
DN 125 (5")	◆ 4 B	Cable glands/terminal box	
DN 150 (6")	◆ 4 H	Metric/Polyamid terminal box or 6000 I compact	◆ 1
DN 200 (8")	◆ 4 P	½" NPT/Polyamid terminal box or 6000 I compact	◆ 2
DN 250 (10")	◆ 4 V		
DN 300 (12")	◆ 5 D	◆ We can offer shorter delivery times for configurations designated with the Quick Ship Symbol ◆. For details see page 9/5 in the appendix.	
DN 350 (14")	◆ 5 K		
DN 400 (16")	◆ 5 R		
DN 450 (18")	◆ 5 Y		
DN 500 (20")	◆ 6 F		
DN 600 (24")	◆ 6 P		
DN 700 (28")	◆ 6 Y		
DN 750 (30")	◆ 7 D		
DN 800 (32")	◆ 7 H		
DN 900 (36")	◆ 7 M		
DN 1000 (40")	◆ 7 R		
(42")	◆ 7 U		
(44")	◆ 7 V		
DN 1200 (48")	◆ 8 B		
Flange norm and pressure rating			
<u>to EN 1092-1</u>			
PN 10 (DN 200 ... 1200/8" ... 48")	◆ B		
PN 16 (DN 50 ... 1200/2" ... 48")	◆ C		
PN 16, non PED (DN 700 ... 1200/28" ... 48")	◆ D		
PN 40 (DN 15 ... 40/½" ... 1½")	◆ F		
<u>to ANSI B16.5</u>			
class 150 (½" ... 24")	◆ J		
<u>to AWWA C-207</u>			
Class D (28" ... 48")	◆ L		
<u>to AS 4087</u>			
PN 16 (DN 50 ... 1200/2" ... 48")	◆ N		
Liner material			
EPDM	◆ 2		
NBR Hard Rubber	◆ 3		
Transmitter			
Sensor for remote transmitter (Order transmitter separately)	◆	A	
MAG 6000 I, Aluminum, 18 ... 90 V DC, 115 ... 230 V AC	◆	C	
MAG 6000, Polyamid, 11 ... 30 V DC/11 ... 24 V AC	◆	H	
MAG 6000, Polyamid, 115 ... 230 V AC	◆	J	
MAG 5000, Polyamid, 11 ... 30 V DC/11 ... 24 V AC	◆	K	
MAG 5000, Polyamid, 115 ... 230 V AC	◆	L	
MAG 6000 CT, Polyamid, 115 ... 230 V AC	◆	M	

Flow Measurement

SITRANS F M

Flow sensor MAG 5100 W

Selection and Ordering data

Order code

Additional information

Please add **"-Z"** to Article No. and specify Order code(s) and plain text.

Factory certificate according to EN 10204-2.2

C14

Factory certificate according to EN 10204-2.1

C15

FP2E marking (only France)

C17

Approval/Verification²⁾

(MI-001 : DN 50-300 compact, EN 1092-1 PN10 and PN16 flanges with MAG 6000 CT)³⁾

- Without verification according to OIML R 49

P10

- MI-001 Q3/Q1 = 25

P11

- MI-001 Q3/Q1 = 63

P12

- MI-001 Q3/Q1 = 80

P13

- MI-001 Q3/Q1 = 160

P16

- MI-001 Q3/Q1 = 200

P17

- MI-001 Q3/Q1 = 250

P18

FM Fire Service Approval

(with ANSI B16.5 Class 150 flanges)

- DN 50, DN 80 and DN 100 (2", 3" and 4")

P20

- DN 150 and DN 200 (6" and 8")

P21

- DN 250 and DN 300 (10" and 12")

P22

Tag name plate, stainless steel fixed with SS wire (add plain text)

Y17

Tag name plate, plastic (self-adhesive)

Y18

Customer-specific converter setup

Y20

Sensor cables wired (specify cable Article No.)

Y40

Sensor for remote transmitter's junction box potted to IP68 with wired cable (specify cable Article No.)

Y41

Other postproduction requirements (add desired text)

Y99

Additional Calibrations

Accredited Siemens Flow Instruments matched pair Calibration acc. to ISO/IEC 17025:2005

On request¹⁾

Customer-witnessed calibration Any of above calibration

On request¹⁾

¹⁾ Ordering On request as dedicated information from the customer on the individual sensors is required. Please fill in the calibration form found on <http://pi.khe.siemens.de/index.aspx?Nr=17460> and send together with the order. (Size dependent restriction on maximum flow rates may apply)

²⁾ For more details and references of the ranges please see the tables on page 3/96.

³⁾ For remote version submit Product Variation Request.

Operating instructions for SITRANS F M MAG 5100 W

Description	Article No.
• English	A5E03063678
• German	A5E03376527
• Spanish	A5E00376529
• French	A5E03376521
• Chinese	A5E03376501

This device is shipped with a Quick Start guide and a CD containing further SITRANS F literature.

All literature is also available for free at:

<http://www.siemens.com/flowdocumentation>

Accessories

Description	Article No.
Potting kit for terminal box of flow sensors for IP68/NEMA 6P (not for Ex sensors)	◆ FDK:085U0220



◆ We can offer shorter delivery times for configurations designated with the Quick Ship Symbol ◆. For details see page 9/5 in the appendix.

MAG 5000/6000 transmitters and sensors are packed in separate boxes, the final assembly takes place during installation at the customer's place. MAG 6000 I transmitters and sensors are delivered compact mounted from factory.

Communication module will be pre-mounted in the transmitter.

Please use online Product selector to get latest updates.


Product selector link:

www.pia-selector.automation.siemens.com

Flow Measurement

SITRANS F M

Flow sensor MAG 5100 W

Selection and Ordering data	Article No.	Selection and Ordering data	Article No.
Sensor SITRANS F M MAG 5100 W	7 ME 6 5 8 0 -	Sensor SITRANS F M MAG 5100 W	7 ME 6 5 8 0 -
Hastelloy electrodes, carbon steel flanges, Non EU water markets		Hastelloy electrodes, carbon steel flanges, Non EU water markets	
Diameter		Transmitter with display	
DN 25 (1")	2 D	Sensor for remote transmitter (Order transmitter separately)	A
DN 40 (1½")	2 R	MAG 6000, Polyamid, 11 ... 30 V DC/11 ... 24V AC	H
DN 50 (2")	2 Y	MAG 6000, Polyamid, 115 ... 230 V AC	J
DN 65 (2½")	3 F	MAG 5000, Polyamid, 11 ... 30 V DC/11 ... 24V AC	K
DN 80 (3")	3 M	MAG 5000, Polyamid, 115 ... 230 V AC	L
DN 100 (4")	3 T	Communication	
DN 125 (5")	4 B	No communication, add-on possible	A
DN 150 (6")	4 H	HART	B
DN 200 (8")	4 P	PROFIBUS PA Profile 3 (only MAG 6000)	F
DN 250 (10")	4 V	PROFIBUS DP Profile 3 (only MAG 6000)	G
DN 300 (12")	5 D	Modbus RTU/RS 485 (only MAG 6000)	E
DN 350 (14")	5 K	FOUNDATION Fieldbus H1 (only MAG 6000)	J
DN 400 (16")	5 R	Cable glands/terminal box	
DN 450 (18")	5 Y	Metric	1
DN 500 (20")	6 F	½" NPT	2
DN 600 (24")	6 P		
DN 700 (28")	6 Y		
DN 750 (30")	7 D		
DN 800 (32")	7 H		
DN 900 (36")	7 M		
DN 1000 (40")	7 R		
(42")	7 U		
(44")	7 V		
DN 1200 (48")	8 B		
DN 1400 (54")	8 F		
DN 1500 (60")	8 K		
DN 1600 (66")	8 P		
DN 1800 (72")	8 T		
DN 2000 (78")	8 Y		
Flange norm and pressure rating			
<u>to EN 1092-1</u>			
PN 6 (DN 1400 ... 2000 (54" ... 78"))	A		
PN 10 (DN 200 ... 2000 (8" ... 78"))	B		
PN 16 (DN 65 ... 600 (2½" ... 24"))	C		
PN 16, non-PED (DN 700 ... 2000 (28" ... 78"))	D		
PN 40 (DN 25 ... 50 (1" ... 2"))	F		
<u>to ANSI B16.5</u>			
class 150 (1" ... 24")	J		
<u>to AWWA C-207</u>			
Class D (28" ... 78")	L		
<u>to AS 4087</u>			
PN 16 (DN 50 ... 1200 (2" ... 48"))	N		
<u>to JIS</u>			
B 2220:2004 K10 (1" ... 24")	R		
Flange material			
Carbon steel flanges ASTM A 105	1		
Liner material			
Ebonite Hard Rubber	4		
Electrode material			
Hastelloy	2		
		Selection and Ordering data	Order code
		Additional information	
		Please add "-Z" to Article No. and specify Order code(s) and plain text.	
		Factory certificate according to EN 10204-2.2	C14
		Factory certificate according to EN 10204-2.1	C15
		Tag name plate, stainless steel fixed with SS wire	Y17
		Tag name plate, plastic (self-adhesive)	Y18
		Customer-specific converter setup	Y20
		Sensor cables wired (specify cable Article No.)	Y40
		Sensor for remote transmitter's junction box potted to IP68 with wired cable (specify cable Article No.)	Y41
		Other postproduction requirements (add desired text)	Y99
		<ul style="list-style-type: none"> We can offer shorter delivery times for configurations designated with the Quick Ship Symbol . For details see page 9/5 in the appendix. 	

Flow Measurement

SITRANS F M

Flow sensor MAG 5100 W


Operating instructions for SITRANS F M MAG 5100 W

Description	Article No.
• German	A5E03376527
• English	A5E03063678
• French	A5E03376521
• Spanish	A5E03376529
• Chinese	A5E03376501

This device is shipped with a Quick Start guide and a CD containing further SITRANS F literature.

All literature is also available for free at:
<http://www.siemens.com/flowdocumentation>

Accessories

Description	Article No.
Potting kit for terminal box of flow sensors for IP68/NEMA 6P (not for Ex sensors)	 FDK:085U0220

◆ We can offer shorter delivery times for configurations designated with the Quick Ship Symbol ◆. For details see page 9/5 in the appendix.

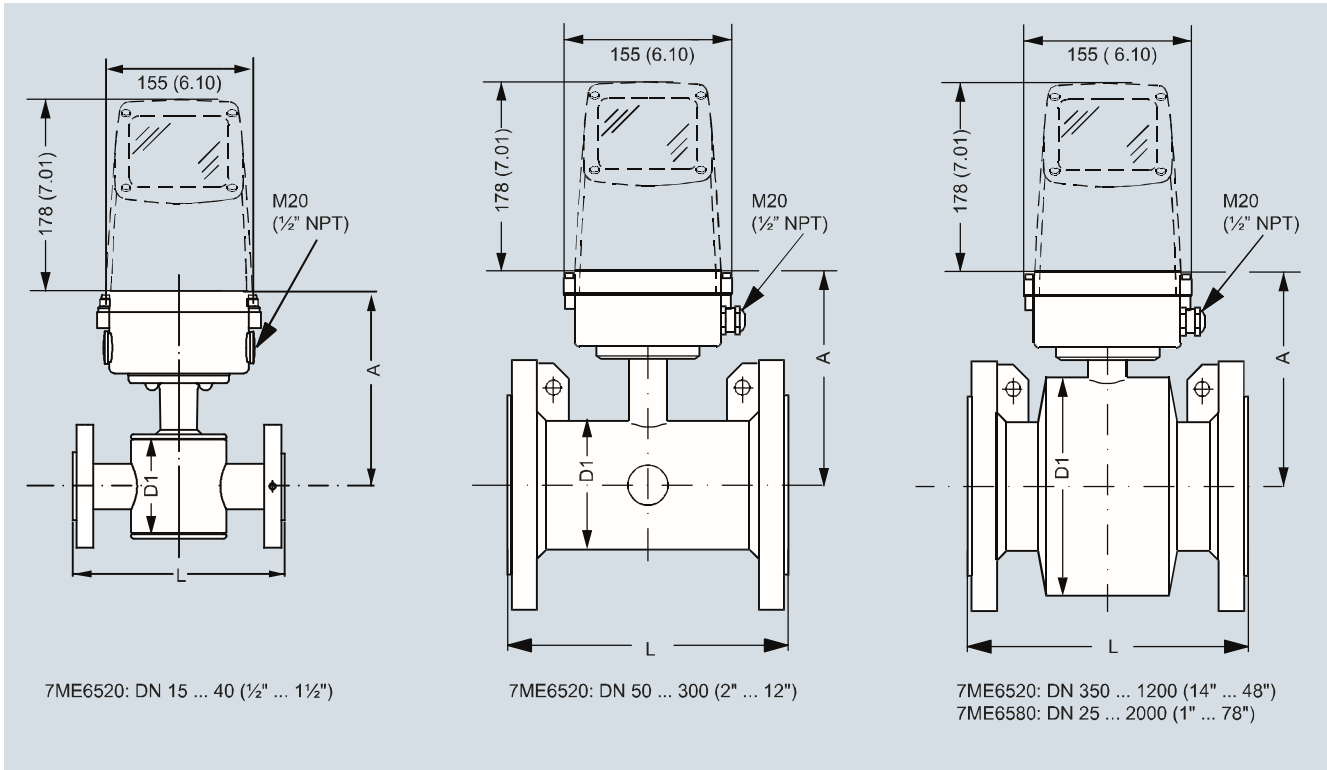
MAG 5000/6000 transmitters and sensors are packed in separate boxes, the final assembly takes place during installation at the customer's place.

Communication module will be pre-mounted in the transmitter.

Please use online Product selector to get latest updates.

Product selector link: www.pia-selector.automation.siemens.com

Dimensional drawings



7ME6520 NBR or EPDM liner						7ME6580 Ebonite liner							
Nominal size A				D1		A				D1		L	
[mm]	[inch]	[mm]	[inch]	[mm]	[inch]	[mm]	[inch]	[mm]	[inch]	[mm]	[inch]	[mm]	[inch]
15	1/2	177	7.0	77	3.0	-	-	-	-	200	7.9		
25	1	187	7.4	96	3.8	187	7.4	104	4.09	200	7.9		
40	1 1/2	202	8.0	127	5.0	197	7.8	124	4.88	200	7.9		
50	2	188	7.4	76	3.0	205	8.1	139	5.47	200	7.9		
65	2 1/2	194	7.6	89	3.5	212	8.3	154	6.06	200	7.9		
80	3	200	7.9	102	4.0	222	8.7	174	6.85	200	7.9		
100	4	207	8.1	114	4.5	242	9.5	214	8.43	250	9.8		
125	5	217	8.5	140	5.5	255	10.0	239	9.41	250	9.8		
150	6	232	9.1	168	6.6	276	10.9	282	11.1	300	11.8		
200	8	257	10.1	219	8.6	304	12.0	338	13.31	350	13.8		
250	10	284	11.2	273	10.8	332	13.1	393	15.47	450	17.7		
300	12	310	12.2	324	12.8	357	14.1	444	17.48	500	19.7		
350	14	382	15.0	451	17.8	362	14.3	451	17.76	550	21.7		
400	16	407	16.0	502	19.8	387	15.2	502	19.76	600	23.6		
450	18	438	17.2	563	22.2	418	16.5	563	22.16	600	23.6		
500	20	463	18.2	614	24.2	443	17.4	614	24.17	600	23.6		
600	24	514	20.2	715	28.2	494	19.4	715	28.15	600	23.6		
700	28	564	22.2	816	32.1	544	21.4	816	32.13	700	27.6		
750	30	591	23.3	869	34.2	571	22.5	869	34.21	750	29.5		
800	32	616	24.3	927	36.5	606	23.9	927	36.5	800	31.5		
900	36	663	26.1	1032	40.6	653	25.7	1032	40.63	900	35.4		
1000	40	714	28.1	1136	44.7	704	27.7	1136	44.72	1000	39.4		
	42	714	28.1	1136	44.7	704	27.7	1136	44.72	1000	39.4		
	44	765	30.1	1238	48.7	755	29.7	1238	48.74	1100	43.3		
1200	48	820	32.3	1348	53.1	810	31.9	1348	53.07	1200	47.2		
1400	54	-	-	-	-	925	36.4	1574	65.94	1400	55.1		
1500	60	-	-	-	-	972	38.2	1672	65.83	1500	59.1		
1600	66	-	-	-	-	1025	40.4	1774	75.39	1600	63		
1800	72	-	-	-	-	1123	44.2	1974	77.72	1800	70.9		
2000	78	-	-	-	-	1223	48.1	2174	85.59	2000	78.7		

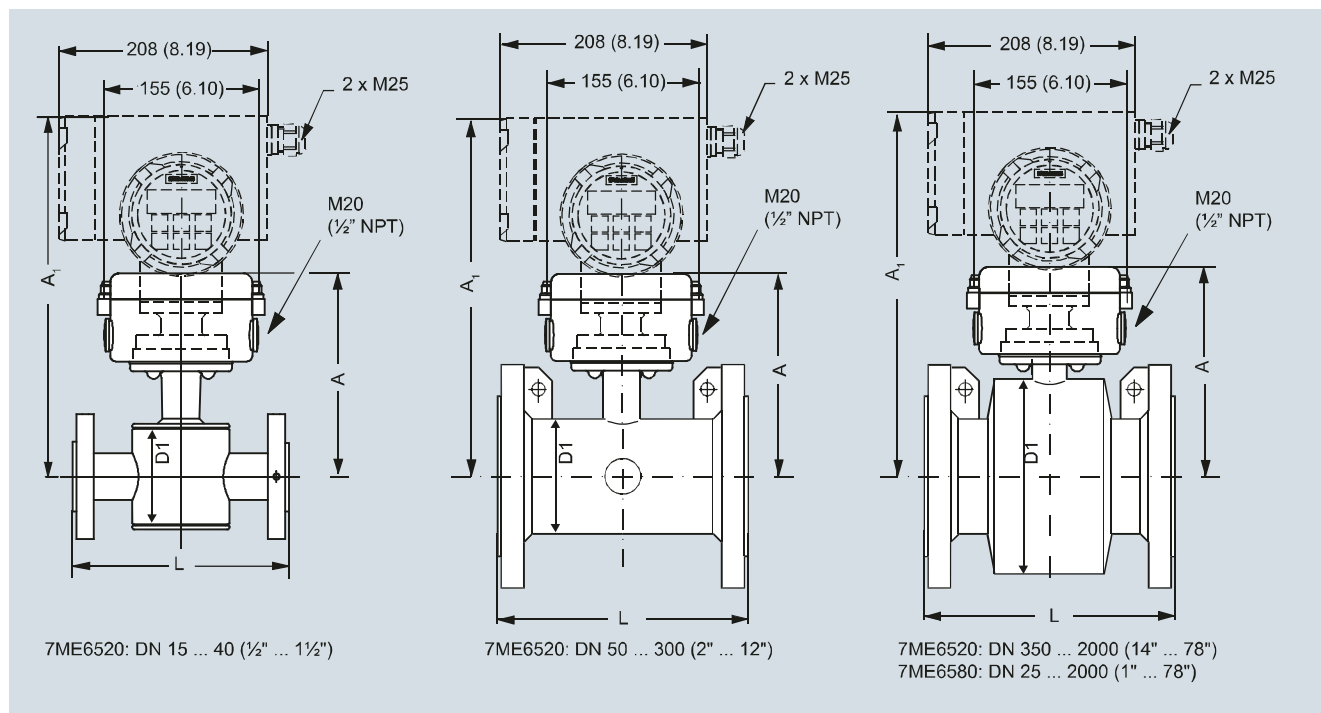
- not available

Flow Measurement

SITRANS F M

Flow sensor MAG 5100 W

MAG 5100 W/6000 I Compact



7ME6520 NBR or EPDM liner								7ME6580 Ebonite liner							
Nominal size	A	A1		D1				A	A1		D1		L		
[mm] [inch]	[mm] [inch]	[mm] [inch]	[mm] [inch]	[mm] [inch]	[mm] [inch]	[mm] [inch]	[mm] [inch]	[mm] [inch]	[mm] [inch]	[mm] [inch]	[mm] [inch]	[mm] [inch]	[mm] [inch]	[mm] [inch]	
15 1/2	177 7.0	331 13.0	77 3.0	187 7.4	- -	- -	200 7.9								
25 1	187 7.4	341 13.4	96 3.8	187 7.4	341 13.4	104 4.09	200 7.9								
40 1 1/2	202 8.0	356 14.0	127 5.0	197 7.8	351 13.8	124 4.88	200 7.9								
50 2	188 7.4	342 13.5	76 3.0	205 8.1	359 14.1	139 5.47	200 7.9								
65 2 1/2	194 7.6	348 13.7	89 3.5	212 8.3	366 14.4	154 6.06	200 7.9								
80 3	200 7.9	354 14.0	102 4.0	222 8.7	376 14.8	174 6.85	200 7.9								
100 4	207 8.1	361 14.2	114 4.5	242 9.5	396 15.6	214 8.43	250 9.8								
125 5	217 8.5	371 14.6	140 5.5	255 10.0	409 16.1	239 9.41	250 9.8								
150 6	232 9.1	386 15.2	168 6.6	276 10.9	430 16.9	282 11.1	300 11.8								
200 8	257 10.1	411 16.2	219 8.6	304 12.0	458 18.0	338 13.31	350 13.8								
250 10	284 11.2	438 17.2	273 10.8	332 13.1	486 19.1	393 15.47	450 17.7								
300 12	310 12.2	464 18.3	324 12.8	357 14.1	511 20.1	444 17.48	500 19.7								
350 14	382 15.0	536 21.1	451 17.8	362 14.3	516 20.3	451 17.76	550 21.7								
400 16	407 16.0	561 22.1	502 19.8	387 15.2	541 21.3	502 19.76	600 23.6								
450 18	438 17.2	592 23.3	563 22.2	418 16.5	572 22.5	563 22.16	600 23.6								
500 20	463 18.2	617 24.3	614 24.2	443 17.4	597 23.5	614 24.17	600 23.6								
600 24	514 20.2	668 26.3	715 28.2	494 19.4	648 25.5	715 28.15	600 23.6								
700 28	564 22.2	718 28.3	816 32.1	544 21.4	698 27.5	816 32.13	700 27.6								
750 30	591 23.3	745 29.3	869 34.2	571 22.5	725 28.5	869 34.21	750 29.5								
800 32	616 24.3	770 30.3	927 36.5	606 23.9	760 29.9	927 36.5	800 31.5								
900 36	663 26.1	817 32.2	1032 40.6	653 25.7	807 31.8	1032 40.63	900 35.4								
1000 40	714 28.1	868 34.2	1136 44.7	704 27.7	858 33.8	1136 44.72	1000 39.4								
	42 714 28.1	868 34.2	1136 44.7	704 27.7	858 33.8	1136 44.72	1000 39.4								
	44 765 30.1	919 36.2	1238 48.7	755 29.7	904 35.6	1238 48.74	1100 43.3								
1200 48	820 32.3	974 38.3	1348 53.1	810 31.9	964 38.0	1348 53.07	1200 47.2								
1400 54	- -	- -	- -	925 36.4	1079 42.5	1574 61.97	1400 55.1								
1500 60	- -	- -	- -	972 38.2	1126 44.3	1672 65.83	1500 59.1								
1600 66	- -	- -	- -	1025 40.4	1179 46.4	1774 69.84	1600 63.0								
1800 72	- -	- -	- -	1123 44.2	1277 50.3	1974 77.72	1800 70.9								
2000 78	- -	- -	- -	1223 48.1	1377 54.2	2174 85.59	2000 78.7								

- not available

Weight

Nominal size		7ME6520 NBR or EPDM liner										7ME6580 Ebonite liner	
		PN 10		PN 16		PN 40		Class 150/AWWA		AS		PN 16	
[mm]	[inch]	[kg]	[lb]	[kg]	[lb]	[kg]	[lb]	[kg]	[lb]	[kg]	[lb]	[kg]	[lb]
15	½	-	-	-	-	4	9	4	9	4	9	5	11
25	1	-	-	-	-	6	12	5	11	4	9	5	11
40	1½	-	-	-	-	8	18	7	15	7	15	8	17
50	2	-	-	9	20	-	-	8	20	9	20	9	20
65	2½	-	-	10.7	24	-	-	11	24	10.7	24	11	24
80	3	-	-	11.6	26	-	-	13	28	11.6	26	12	26
100	4	-	-	15.2	33	-	-	19	41	15.2	33	16	35
125	5	-	-	20.4	45	-	-	24	52	-	-	19	42
150	6	-	-	26	57	-	-	29	64	26	57	27	60
200	8	48	106	48	106	-	-	56	124	48	106	40	88
250	10	64	141	69	152	-	-	79	174	69	152	60	132
300	12	76	167	86	189	-	-	110	243	86	189	80	176
350	14	104	229	125	274	-	-	139	307	115	254	110	242
400	16	119	263	143	314	-	-	159	351	125	277	125	275
450	18	136	299	173	381	-	-	182	400	141	311	175	385
500	20	163	359	223	491	-	-	225	495	189	418	200	440
600	24	236	519	338	744	-	-	320	704	301	664	287	633
700	28	270	595	314	692	-	-	273	602	320	704	330	728
750	30	-	-	-	-	-	-	329	725	-	-	360	794
800	32	346	763	396	873	-	-	365	804	428	944	450	992
900	36	432	951	474	1043	-	-	495	1089	619	1362	530	1168
1000	40	513	1130	600	1321	-	-	583	1282	636	1399	660	1455
	42	-	-	-	-	-	-	687	1512	-	-	-	-
	44	-	-	-	-	-	-	763	1680	-	-	1140	2513
1200	48	643	1415	885	1948	-	-	861	1896	813	1789	1180	2601
1400	54	1592	3510	-	-	-	-	-	-	-	-	1600	3528
1500	60	-	-	-	-	-	-	-	-	-	-	2460	5423
1600	66	2110	4652	-	-	-	-	-	-	-	-	2525	5566
1800	72	2560	5644	-	-	-	-	-	-	-	-	2930	6460
2000	78	3640	8025	-	-	-	-	-	-	-	-	3665	8080

- not available

With transmitter MAG 5000 and MAG 6000 compact, weight is increased by approximately 0.8 kg (1.8 lb), with MAG 6000 I, weight is increased by 5.5 kg (12.1 lb).