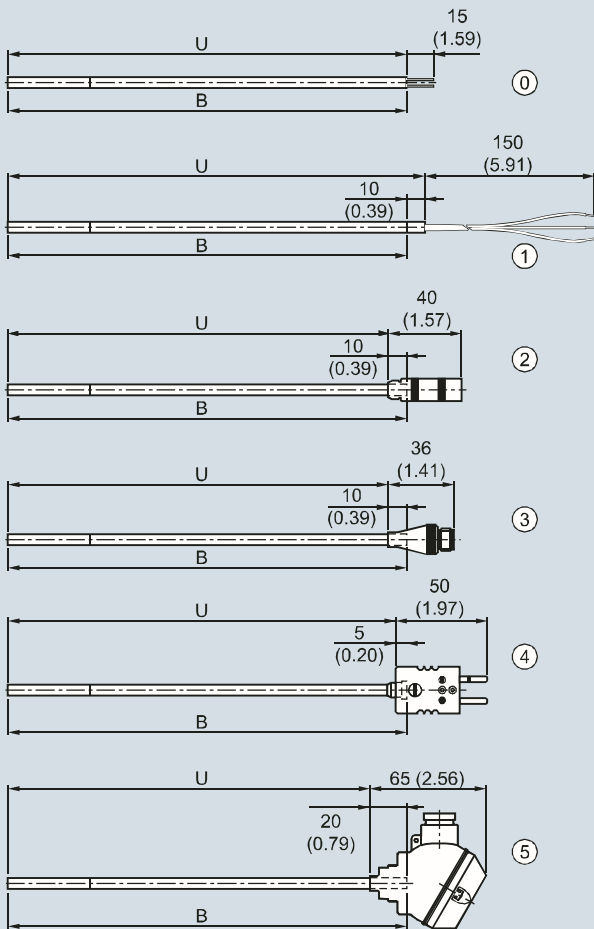


Temperature Measurement

SITRANS TS200

Compact
mineral-insulated

Dimensional drawings



B Measuring insert length
H Head height
U Insertion length

① Basic sensor	$U = B$	IP00
① Flying leads	$U = B + 10 (0.39)$	IP00
② LEMO coupling 1S	$U = B - 10 (0.39)$	IP50
③ M12 plugs	$U = B - 10 (0.39)$	IP54
④ Thermocouple coupling	$U = B - 5 (0.20)$	IP20
⑤ Mini connection head	$U = B - 20 (0.79)$	IP54

SITRANS TS200, temperature sensors in cable version, universal use, mineral-insulated version, for unfavorable space conditions, dimensions in mm (inch)

Temperature Measurement SITRANS TS200

Compact
mineral-insulated

2

Selection and Ordering data	Article No.	Ord. Code
SITRANS TS200 Temperature sensors in compact version, universal use, mineral-insulated version, for unfavorable space conditions	7MC7212-	
Sensor diameter 6 mm (0.24 inch) Special version	6 9	H 1 Y
Length of sensor element B, effective length U see dimensional drawing on page 2/112 200 mm (7.87 inch) 500 mm (19.68 inch) 750 mm (29.53 inch)	C D E	
Customer-specific length of sensor element B, effective length U see dimensional drawing on page 2/112 enter customer specific length with Y44, see Order Codes below 70 ... 100 mm (2.76 ... 3.94 inch) Standard: 100 mm (3.94 inch) 101 ... 250 mm (3.98 ... 9.84 inch) Standard: 200 mm (7.87 inch) 251 ... 500 mm (9.88 ... 19.68 inch) Standard: 500 mm (19.68 inch) 501 ... 750 mm (19.72 ... 29.53 inch) Standard: 750 mm (29.53 inch) 751 ... 1 000 mm (29.57 ... 39.37 inch) Standard: 1 000 mm (39.37 inch) 1 001 ... 1 500 mm (39.4 ... 59.00 inch) Standard: 1 500 mm (59.00 inch)	B C D E F G	
Special length for sensor element B, effective length U see dimensional drawing on page 2/112 Special length Sensor element > 1 500 mm (59.06 inch)	X	
Sensor Pt100, basis, -50 ... +400 °C (-58 ... +752 °F) Pt100, vibration-resistant, -50 ... +400 °C (-58 ... +752 °F) Pt100, expanded range, -196 ... +600 °C (-320.8 ... +1 112 °F) Thermocouple Type K, -40 ... +1 000 °C (-40 ... +1,832 °F) Thermocouple Type J, only class 2, -40 ... +750 °C (-40 ... +1,382 °F)	A B C K J	
Number/Accuracy Single, basic accuracy (Class 2/Class B) Single, increased accuracy (Class 1/Class A) Single, highest accuracy (Class AA) Double, basic accuracy (Class 2/Class B) Double, increased accuracy (Class 1/Class A) Double, highest accuracy (Class AA) Special version of sensor type, number and accuracy	1 2 3 4 5 6 Z 0	K 1 Y
Design of connection side Solid wire ends (sensor element) Flying leads LEMO coupling 1S M12 connector, not for double Pt100 Thermocouple coupling, from TC-material (2xTC on request) Mini connection head, aluminum, not for double Pt 100 Special version, connection side	0 1 2 3 4 5 9	M 1 Y

Selection and Ordering data	Order code
-----------------------------	------------

Further designs Add "-Z" to Article No. and specify Order Code.	
Enter sensor diameter in plain text	H1Y
Enter sensor type, number and accuracy in plain text	K1Y
Enter type of connection side in plain text	M1Y
Customer-specific length of sensor element B, effective length, U see dimensional drawing on page 2/112 Select range, enter desired length in plain text (No entry = standard length)	Y44

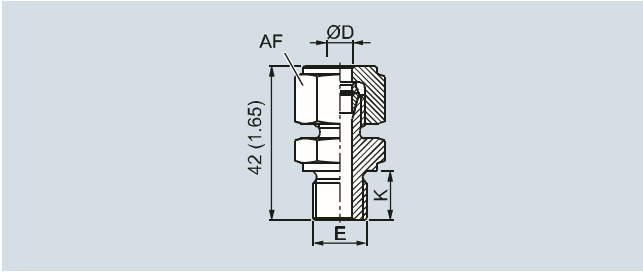
Additional configurations on page after next page!

You find ordering examples on page 2/107.

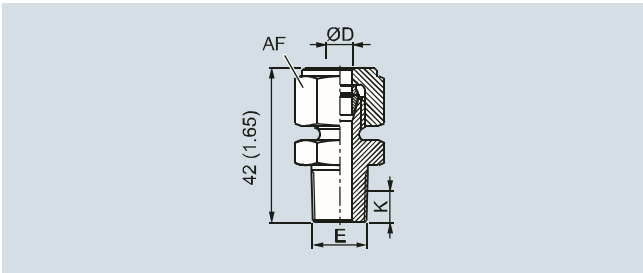
Temperature Measurement SITRANS TS200

Compact
mineral-insulated

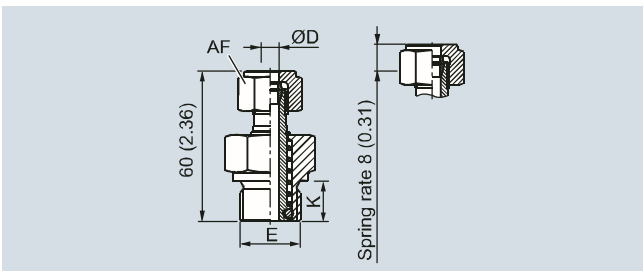
2



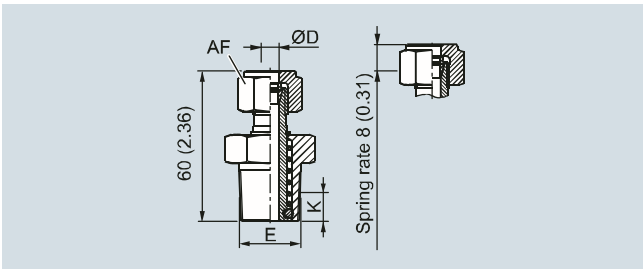
Compression fitting, dimensions in mm (inch)



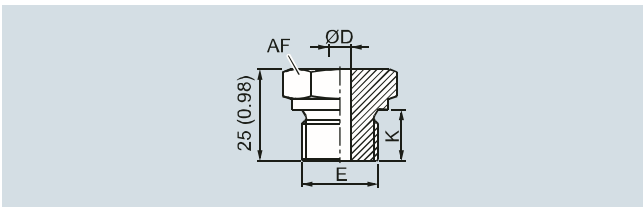
Compression fitting NPT, dimensions in mm (inch)



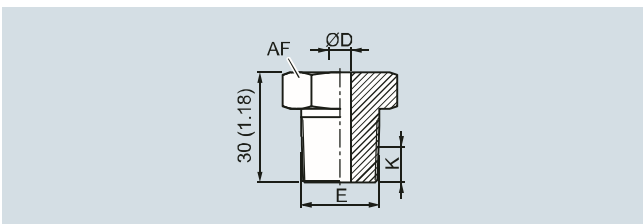
Spring-loaded compression fitting, dimensions in mm (inch)



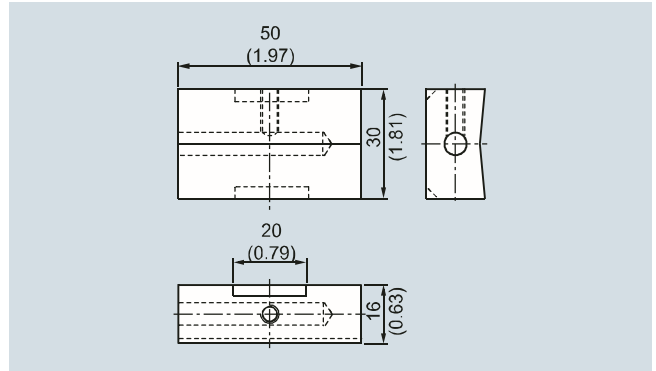
Spring-loaded compression fitting NPT, dimensions in mm (inch)



Soldering nipple, metric, dimensions in mm (inch)



Soldering nipple NPT, dimensions in mm (inch)



Surface connection piece, dimensions in mm (inch)

Selection and Ordering data	Order code
Options	
Add "-Z" to Article No., add options, separate extensions with "+".	
Process connection	
Soldering nipple G $\frac{1}{4}$ ", enclosed	A20
Soldering nipple G $\frac{1}{2}$ ", enclosed	A21
Soldering nipple NPT $\frac{1}{2}$ ", enclosed	A22
Soldering nipple M18x1.5, enclosed	A23
Soldering nipple M8x1, enclosed	A24
Compression fitting G $\frac{1}{4}$ ", enclosed	A30
Compression fitting G $\frac{1}{2}$ ", enclosed	A31
Compression fitting NPT $\frac{1}{2}$ ", enclosed	A32
Compression fitting M8x1, enclosed	A34
Compression fitting, spring-loaded G $\frac{1}{2}$ ", enclosed	A41
Compression fitting, spring-loaded NPT $\frac{1}{2}$ ", enclosed	A42
Compression fitting, spring-loaded M18x1.5, enclosed	A43
Compression fitting, spring-loaded, M8x1, enclosed	A44
Surface connection piece, enclosed	A50
Explosion protection (in preparation)	
Intrinsic safety "ia", "ic"	E01
Certificates and approvals	
EN10204-3.1 Inspection certificate for materials coming into contact with media	C12
EN10204-3.1 Inspection certificate visual, measurement and functional inspection	C34
NACE Standard MR-01-75 compliance	C50
ISO 9001 grease-free (cleaned for e.g. oxygen applications)	C51
Setting, designation, calibration	
Stainless steel TAG plate , Enter lettering in plain text	Y15
Plant calibration per 1 point, enter temperature in plain text. Attention: For devices with built-in head transmitters, select test points within the set measurement range	Y33
Further options	
Special version, enter in plain text	Y99

You find ordering examples on page 2/107.